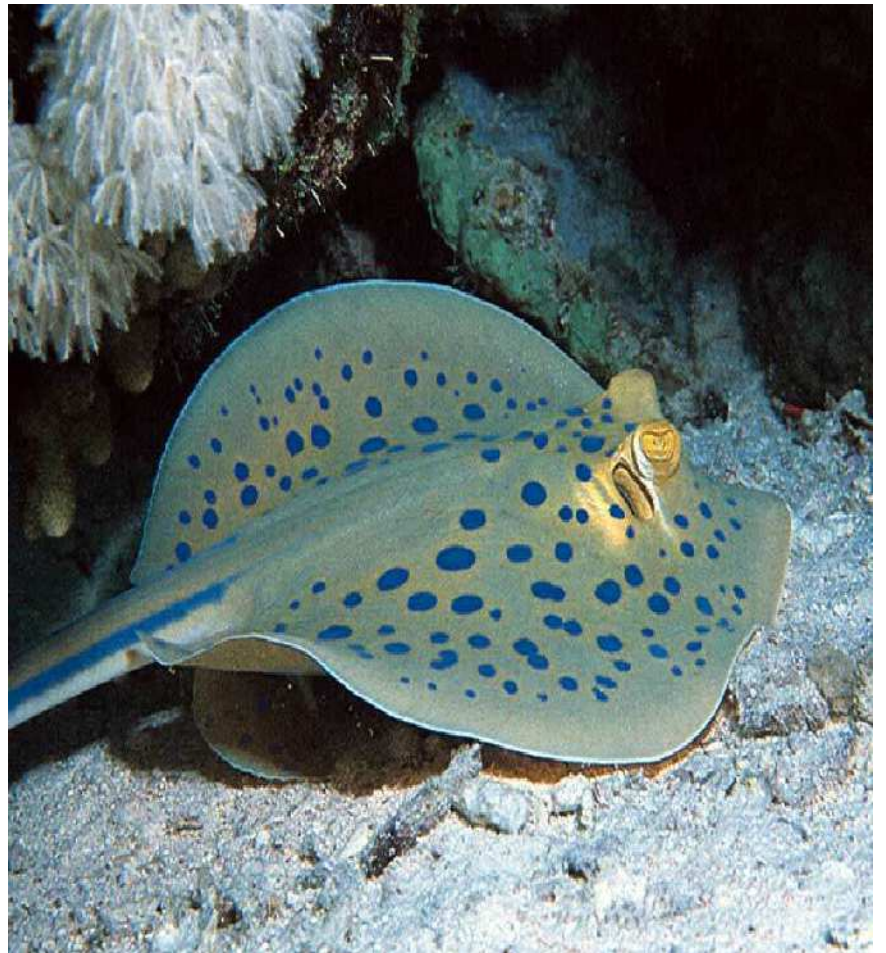


Animal Facts:

Rays

www.instantdisplay.co.uk

Rays are huge group of over 300 species of fish, which includes skates, stingrays, electric rays, manta rays, eagle rays and guitar fish.



www.instantdisplay.co.uk

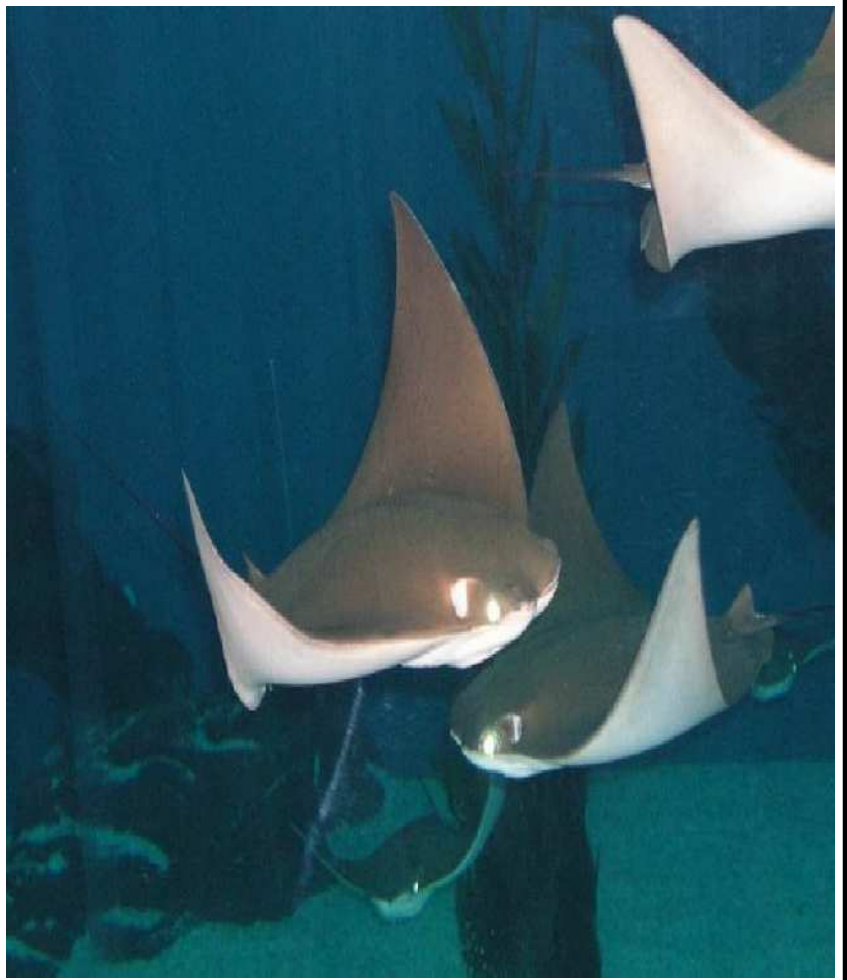
Many rays have flat, almost diamond shaped bodies, with pectoral fins elongated into broad wings. Guitar fish have longer, more shark like bodies.



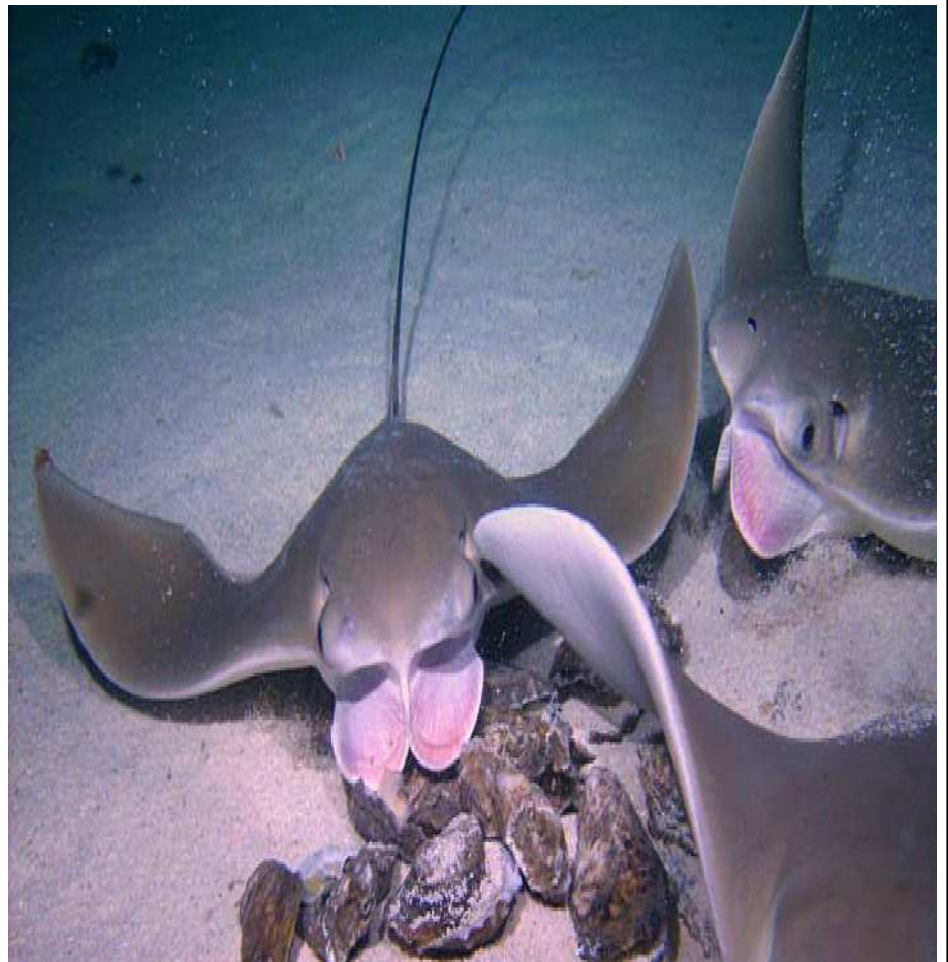
A ray's gills are slot like openings beneath its fins.



Rays have no bones. Instead like sharks, they are cartilaginous fish, their body framework is made of rubbery cartilage (you have this in your nose and ears).



Rays live mostly on the ocean floor, feeding on seabed creatures such as oysters, clams and other shellfish.



Manta rays
live near the
surface and
feed on
plankton.



www.instantdisplay.co.uk

The
Atlantic
manta ray
is the
biggest ray,
often over
7 m wide
and 6 m
long.

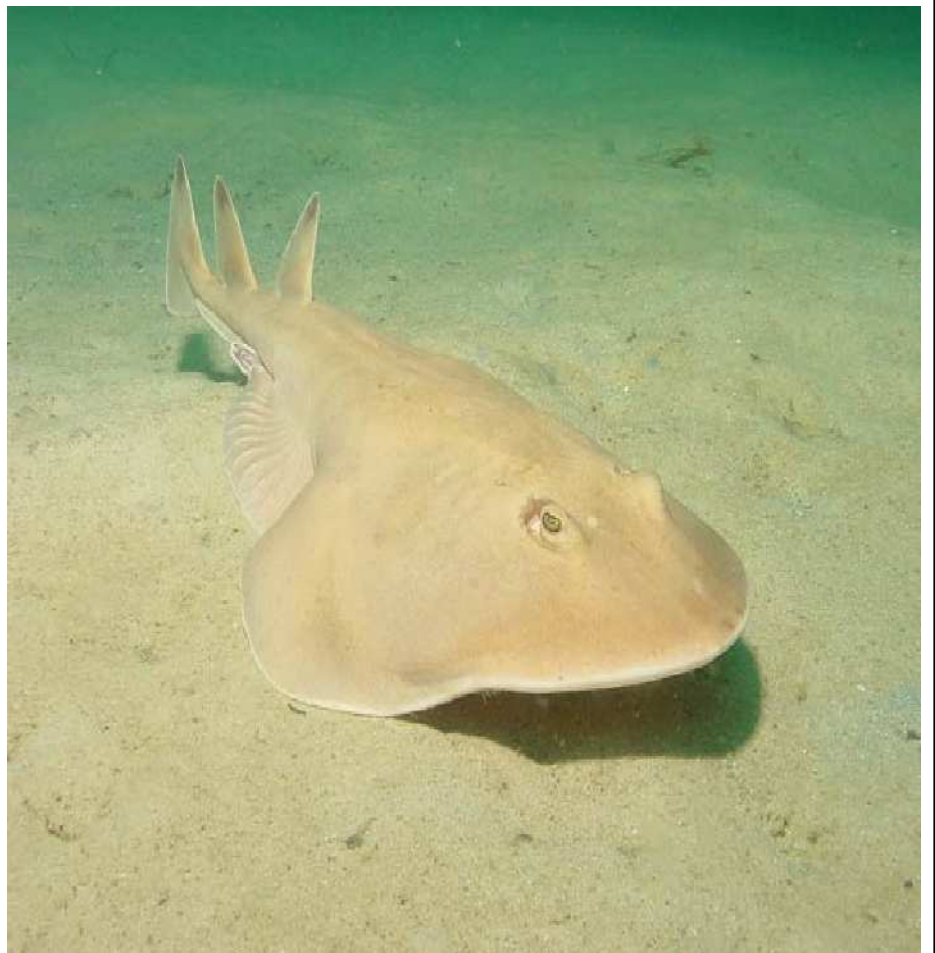


www.instantdisplay.co.uk

Stingrays get their name from their whip like tail with its poisonous barbs. A sting from a stingray can make humans very ill.



Electric rays are tropical rays able to give off a powerful electric charge to defend themselves against attackers.



The black torpedo ray can put out a 220 volt shock - as much as a household socket.

